



Congestion

Charging

in London



hours and charges

Drivers of vehicles that are driven or parked* on a public road in the charging zone in Central London at any time between 7.00am and 6.00pm Monday - Friday will have to pay a £8.00 Congestion Charge per day. VAT is not applicable.

*other than in designated parking bays

**Bank Holidays excluded

payment

The £8.00 charge may be paid at self-service payment stations, at newsagents, by post or by telephone (0845 900 1234). A web site (www.cclondon.com) will take credit card payments from pre-registered users who can also use text messages.

Payment can be made in advance, or on the day itself up to midnight. Payment can be made by midnight on the following charging day at a cost of £10. This can only be done via the call centre or website.

enforcement

Enforcement is via cameras which read the number plates of vehicles entering, driving or parked in the zone. The number plate data is fed to a central database and matched to the payments received.

At the end of the next charging day the registered keeper of any vehicle without a corresponding payment is sent an £100 fine which is cut to £50 if it's paid within 14 days but which will rise to £150 if it's unpaid after 28 days.

exemptions

A number of vehicles are exempt from the Congestion Charge.

- London-licensed Black Cabs/minicabs
- Motorbikes/Scooters/Mopeds
- NHS vehicles exempt from Vehicle Excise Duty
- Licensed buses with nine or more seats
- Emergency service vehicles exempt from vehicle excise duty

All other vehicles are liable for the Congestion Charge but may be given a discount(see Discount panel below).

discounts

Discounts are available for the following but they will have to pay an annual £10 registration fee for each vehicle:

- Residents living in the zone (90%) (one vehicle per person only)
- Blue Badge holders (100%)
- Accredited breakdown vehicles (100%)
- Electrically powered vehicles (100%)
- Alternative fuel vehicles* (100%)
- Vehicles with nine or more seats (100%)

If you qualify for a resident's discount and use a rental vehicle, you still have to pay the normal £8 daily charge but you can apply for a refund of the additional charges. The full explanation and detail regarding the administration charges which are applicable can be found by clicking the link below.

[Residents Discount Scheme Explanation](#)

All other people are liable for the Congestion Charge.

*Must be listed in certain groups on Transport Action (Powershift) Register (see www.est-powershift.org.uk) and goods vehicles must have a maximum gross weight of 3,500kgs and be at least Euro III compliant.

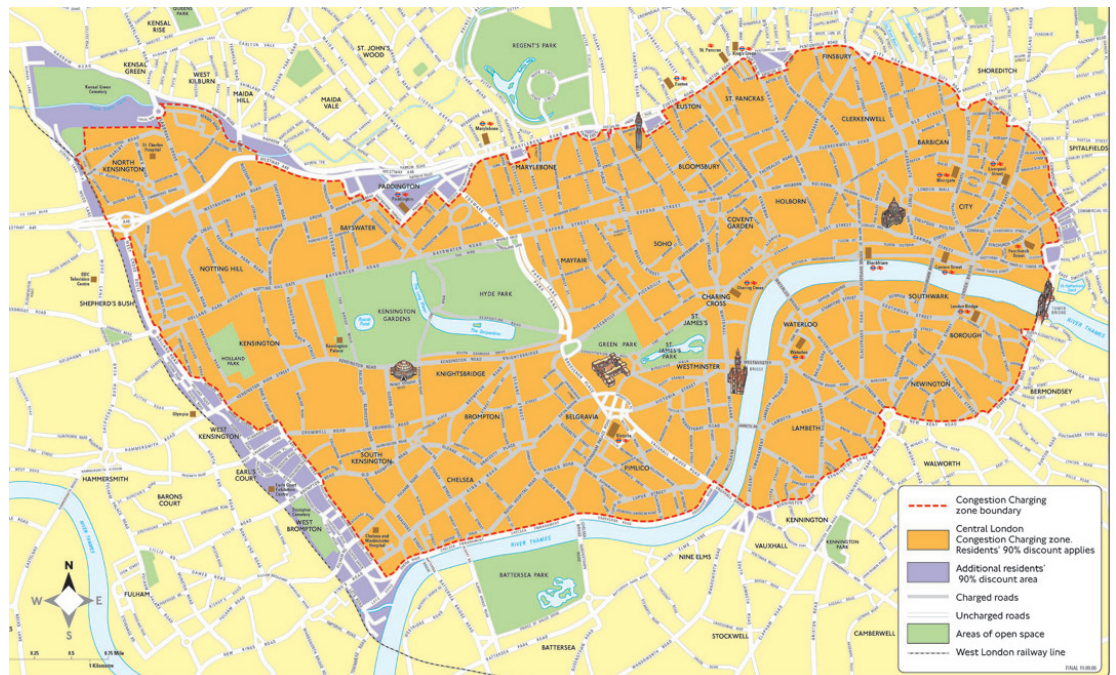
Congestion charging

zone boundaries

The zone stretches from the city in the East to West Kensington and from Paddington to Vauxhall. There is a free route through the middle of the zone from Paddington to Vauxhall and the westway is also a free route. For a full map please follow the link below:

<http://www.tfl.gov.uk/tfl/cc-ex/maps.shtml>

A white 'C' set on a red circle on the road surface indicates the entrance points to the zone. There are no toll booths or barriers.



fleet operators

To reduce the level of administration and increase flexibility for fleet operators a fleet scheme is available if a fleet is larger than 10 vehicles, this includes cars, LCVs and HGVs. It can also include vehicles registered for most discounts, excluding residents vehicle discount and blue badge discount.

To cover administration costs, you will be charged £10 per vehicle per year for registration onto the Fleet Scheme. This will be drawn by direct debit when the first pre-payment is taken and thereafter on an annual basis for each registered vehicle.

Once registration is complete, you will be given access to your Fleet Account and monthly invoices via a dedicated Fleet extranet, where you will be able to amend your Fleet Account details as required, with security ensured through a customer number and your chosen PIN.

Under this scheme, the number plates of the fleet vehicles you have registered are captured by the network of cameras and the appropriate charges calculated automatically.

A pre-payment for the forthcoming month is drawn by direct debit from your fleet account. This amount will take into account any differences between the predicted and actual charges for the previous month and your anticipated charges for the next month.

Under this scheme you pay £7.00 per day per vehicle in the congestion charging zone during charging hours.

You are able to add vehicles to your scheme on an ad-hoc basis, for example rental vehicles, at no charge for a maximum of three weeks. The number of ad-hoc vehicles you are allowed in a month is limited to the number of vehicles that are on your account. These vehicles will be charged at the normal £8 rate.

